

Guilford of Maine • **Rattan**

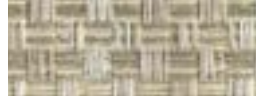
**Gr B**



**Alabaster** (3087-021)



**Graphite** (3087-060)



**Harvest** (3087-030)



**Ivory** (3087-010)



**Mercury** (3087-020)



**Sky** (3087-051)



**Spring** (3087-070)



**Storm** (3087-050)



**Tuscan** (3087-040)

### Specifications

#### Content

34% post-consumer recycled, 66% pre-consumer recycled content

#### Repeat

H: 13.9"

V: 17.7"

#### Width

66 in.

#### Weight

14.7 ± 0.5 oz./lin. yd

#### Cutting Direction

NR - Non-railroaded

#### Cleaning Code

W-S: Clean with water based cleaning agents, foam or pure, water free solvents. Vacuuming or light brushing is recommended to prevent dust and soil buildup.

### Performance

- Green Certification : Terratec and Carbon Neutral
- Colorfastness Wet : 3
- Colorfastness Dry : 4
- Passes Cal-117-2013
- ASTM E 84 Unadhered, as stocked : Class I or A
- Tensile Strength Weft : 200
- Tensile Strength Warp : 225
- Seam Slippage Weft : N/A
- Seam Slippage Warp : N/A
- UL Recognized

The colors on this card are digital representations. Please refer to an actual sample before finalizing your selection.